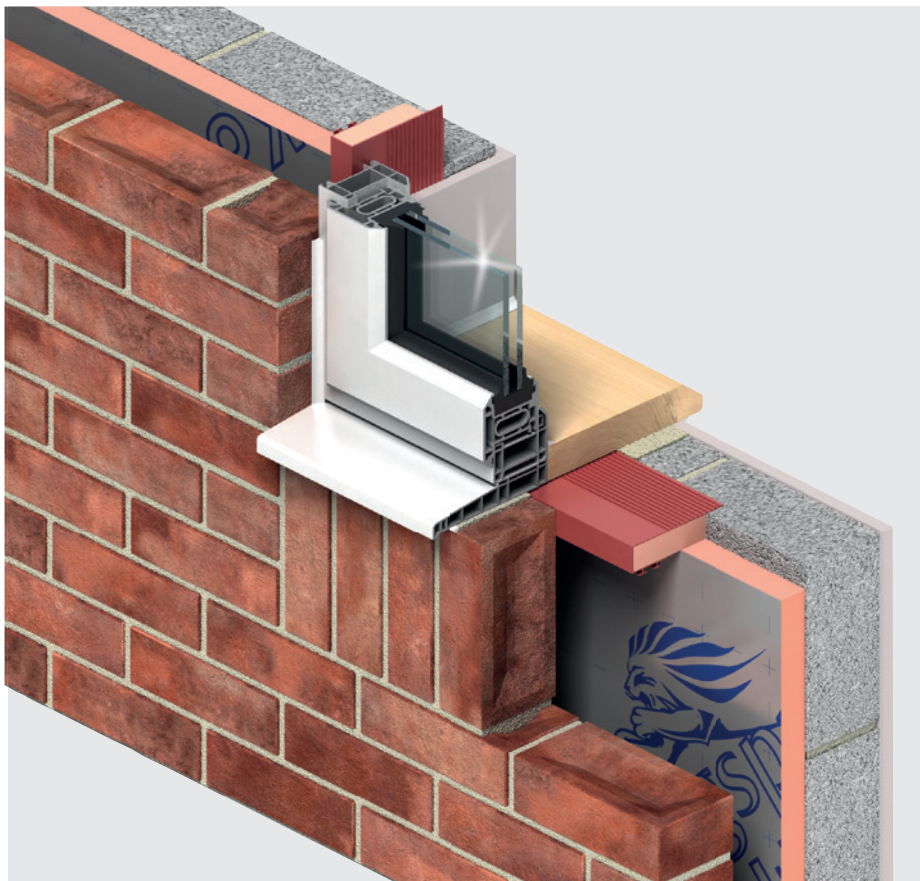


Insulation



Kooltherm[®] Cavity Closer

Insulated Cavity Closers for Closing Cavities around Masonry Wall Openings



- For use in England & Wales only
- Simplified SAP calculations - bespoke set of psi-values for jamb and sill details valid for a broad range of constructions
- Inhibited heat transfer - reduces thermal bridging, condensation risk and mould growth
- Weather resistant - forms an integral DPC
- Can be fitted with door / window frames as a combined unit
- Unaffected by air-infiltration
- Easy to handle and install
- Non-deleterious material
- Insulation core manufactured with a blowing agent that has zero ODP and low GWP

Fibre-free
Core

Kingspan[®]

Design Considerations

Introduction

Kingspan Kooltherm® Cavity Closer comprises a uPVC J-section with a premium performance fibre-free rigid thermoset phenolic insulation core manufactured with a blowing agent that has zero Ozone Depletion Potential (ODP) and low Global Warming Potential (GWP).

Kingspan Kooltherm® Cavity Closer provides a simple and highly effective method for closing cavities around openings in masonry cavity wall constructions in England & Wales. For other construction types and constructions in Scotland, please contact the Kingspan Insulation Technical Service Department (see rear cover for details) for further advice.

Suitable for use in both new build and refurbishment, Kingspan Kooltherm® Cavity Closer is compatible with uPVC, timber, metal and composite window frames. The thermally efficient insulation core inhibits heat transfer and thus reduces thermal bridging, whilst the uPVC casing provides a damp proof barrier.

There are potential restrictions placed upon this product which vary dependant on building type, height, construction and location. For guidance regarding the routes to compliance for meeting the fire safety requirements of the Building Regulations / Standards, refer to the relevant links to Government websites at www.kingspaninsulation.co.uk/fireregulations.

Kingspan Kooltherm® Cavity Closer is a cavity closer. Current guidance to the Building Regulations should be considered with regard to the performance requirements for, and the provision of fire stops and cavity barriers.

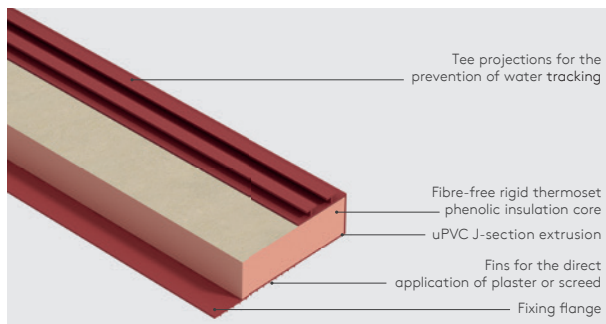


Figure 1: Kingspan Kooltherm® Cavity Closer

The proper use of Kingspan Kooltherm® Cavity Closer can reduce the risk of condensation forming at reveals and thus unsightly mould growth, which can lead to the deterioration of plaster, paintwork and wallpaper - problems commonly associated with the use of traditional methods for the closing of cavities.

Kingspan Kooltherm® Cavity Closer sections are manufactured in thirteen profile widths ranging from 50-150 mm. Jointing Clips extend the range further by enabling sections to be coupled back-to-back, in order to suit cavity widths of up to 300 mm.

The casing incorporates tee projections along one plane length for the prevention of water tracking within the cavity, and fins along the widest plane length, which form an effective key for the direct application of plaster or screed.

To maximise the efficiency and scope for variable design options, a complete line of accessories is also available. This document covers the use of Kingspan Kooltherm® Cavity Closer in masonry cavity wall constructions only.

Typical Design Detail

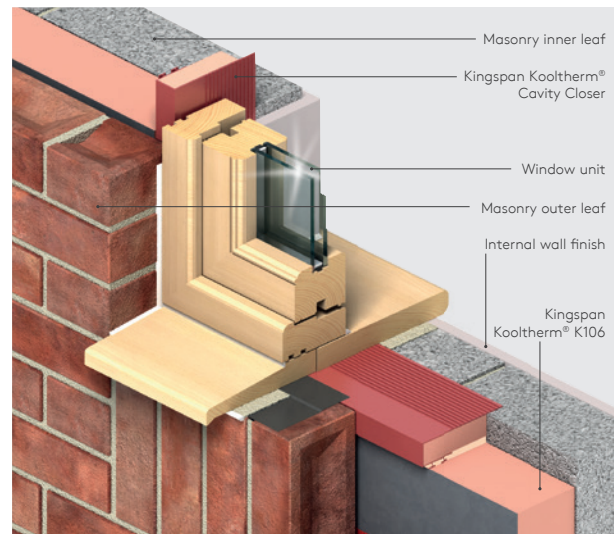


Figure 2: Kingspan Kooltherm® Cavity Closer in a Masonry Cavity Wall Construction with Kingspan Kooltherm® K106 Cavity Board

Design Considerations

Specification Clause

Kingspan Kooltherm® Cavity Closer should be described in specifications as:

The insulated cavity closer shall be Kingspan Kooltherm® Cavity Closer __*: comprising a one piece, rigid, J-section, u-PVC extrusion, with mortar fins for direct plaster / screed application, projecting fixing flange, and a premium performance fibre-free rigid thermoset phenolic insulation core. The insulation component of the product shall be manufactured with a blowing agent that has zero Ozone Depletion Potential (ODP) and low Global Warming Potential (GWP). The product shall be manufactured under a management system certified to ISO 9001: 2015, ISO 14001: 2015; ISO 45001: 2018; and ISO 50001: 2018; by Kingspan Insulation Limited; and installed in accordance with the instructions issued by them.

*Insert width of section.

NBS Specifications

NBS users should refer to clause:
F30 180 (Standard and Intermediate)
F30 18 (Minor works)
Pr_35_90_50_64 Plastics cavity closers (Uniclass 2015)

Building Information Modelling (BIM)

Kingspan Insulation's BIM objects can be downloaded in Revit and in IFC formats. For more information please visit www.kingspaninsulation.co.uk/bim.

Linear Thermal Bridging

Basic Principles

Linear thermal bridging describes the heat loss / gain that occurs at junctions between elements e.g. where an external wall meets the ground floor, or at junctions around openings in the building fabric where the thermal insulation layer is discontinuous e.g. sills, jambs and lintels around the windows in a masonry cavity wall construction.

Interruptions within the insulation layer by materials with poorer insulating properties can result in a thermal bridge, which in turn can lead to problems of condensation and mould growth especially if there is a drop in surface temperature.

The heat flow at these junctions and opening locations, over and above that through the adjoining plane elements, is the linear thermal transmittance of the thermal bridge: measured in W/mK; referred to as a 'psi-value'; and expressed as a 'ψ-value'.

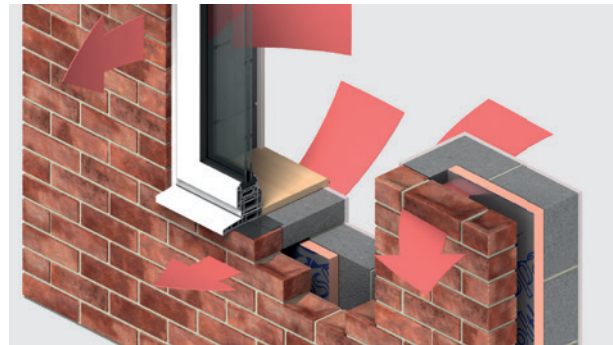


Figure 3: Heat Loss Paths Around a Typical Window Opening in a Masonry Cavity Wall Construction

The lower the ψ -value, the better the performance. ψ -values are taken into account in the calculation methodologies e.g. the Standard Assessment Procedure (SAP), that are used to assess the operational CO₂ emissions and, where applicable, the fabric energy efficiency of buildings.

ψ -values can comprise either, or a combination of, approved, calculated or assumed values.

Reducing Linear Thermal Bridging

Detailing at junctions to minimise the effects of thermal bridging and the associated risk of condensation or mould growth is important and there are some simple design considerations that can be adopted to help mitigate the risks and to reduce heat losses.

At a window or door opening, the primary linear thermal bridge is the reveal. This can be reduced by insulating the reveal. The key factor is the thermal resistance (R-value) of the insulation layer. Reveals should be designed to accommodate 32.5 mm (min.) of Kingspan Kooltherm® K118 Insulated Plasterboard.

Improved thermal performance can also be achieved by reducing the overlap between the external brickwork and the opening frame. Increasing the overlap between the frame and Kingspan Kooltherm® Cavity Closer maximises the benefits of using an insulated cavity closer by reducing the heat lost through the junction.

Design Considerations

Construction Details

Approved / Accredited Construction Details (ACDs)

A set of standardised construction details, known as 'Approved / Accredited Construction Details' (ACDs) provide one method to assist the construction industry in achieving the performance standards required to demonstrate compliance with the energy efficiency requirements of the Building Regulations / Standards. They facilitate the 'designing out' of thermal bridges, whilst enabling an 'approved ψ -value' to be assigned to each junction within the building at both design and as-built stages.

A number of ACDs have been published by the Ministry of Housing, Communities and Local Government (MHCLG). Whilst the more recent ACDs are comprehensive, in that there is a ψ -value specific to a particular construction type, the earlier ACDs are much more generic.

If the ACDs published by MHCLG are adopted in England & Wales, a minimum thermal resistance path of 0.45 m²K/W through the cavity closer and a minimum overlap of 30 mm between the window frame and the cavity closer is required. Kingspan Kooltherm[®] Cavity Closer will exceed the thermal resistance path of 0.45 m²K/W.

Numerically Modelled Details

Kingspan Insulation had a number of permutations of details incorporating Kingspan Kooltherm[®] Cavity Closer modelled and a set of ψ -values calculated for them by BRE. These calculated ψ -values are considerably better than those approximated for the ACDs published by MHCLG and will facilitate compliance with the energy efficiency requirements of the Building Regulations.

The permutations with the greatest door / window frame depths and greatest overlaps between the frame and Kingspan Kooltherm[®] Cavity Closer, result in the lowest ψ -values.

Overlap (mm)	λ -value (W/mK)
30	0.027
50	0.018
75	0.012
100	0.007

Table 1: Calculated ψ -values circulated for Jamb & Sill Details incorporating Kingspan Kooltherm[®] Cavity Closer

To assist designers engaged in assessing the energy and emissions performance of buildings, the ψ -values shown in Table 1 can be used for both jamb and sill details, within the broad range of constructions shown in Figure 4, based upon the level of overlap that occurs between the window or door frame and the cavity.

For the full set of calculated ψ -values regarding the full range of frame depths and U-values, please visit www.kingspaninsulation.co.uk/psidetails.

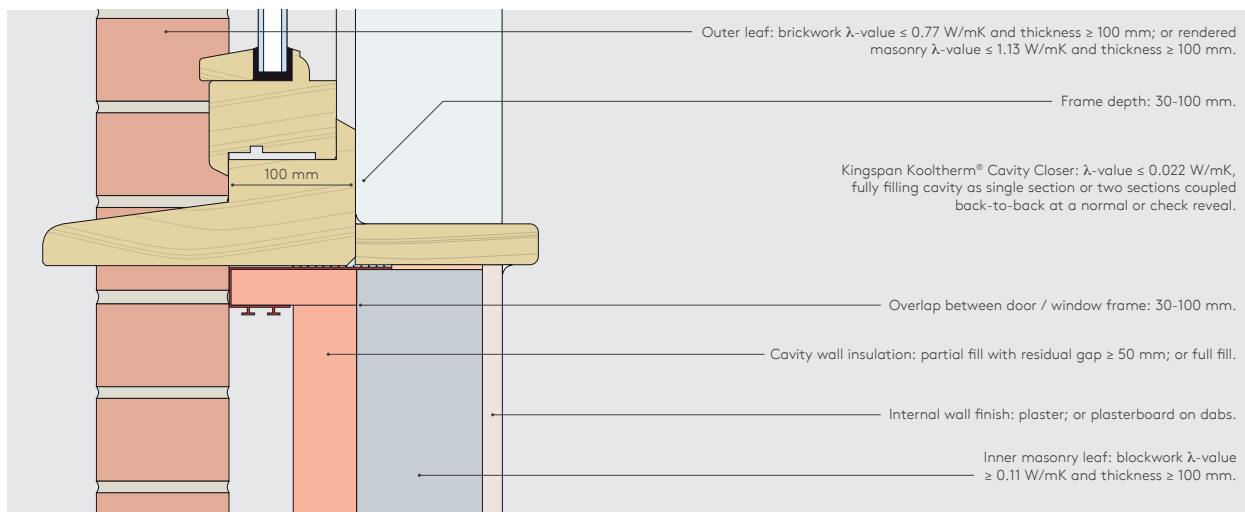


Figure 4: Wall Construction Variations & Restrictions for which the ψ -values calculated for Jamb & Sill Details incorporating Kingspan Kooltherm[®] Cavity Closer are valid.

Design Considerations

Typical Details

A variety of constructions can be formed with the use of Kingspan Kooltherm® Cavity Closer to suit differing scenarios. The details shown in Figures 5-13 illustrate the design flexibility of Kingspan Kooltherm® Cavity Closer.

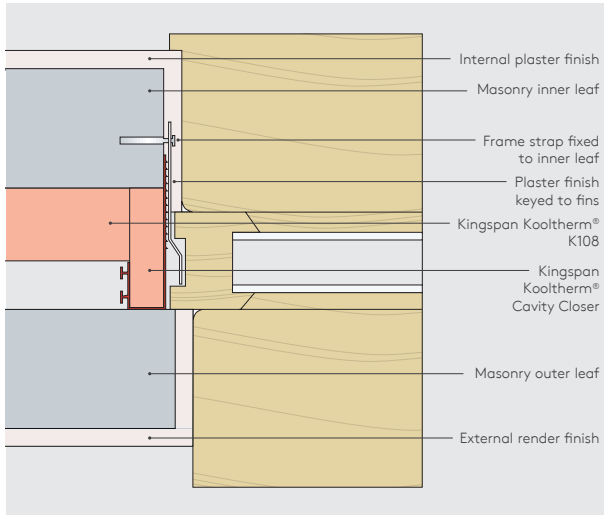


Figure 5: Jamb Detail Incorporating Kingspan Kooltherm® Cavity Closer at a Check Reveal

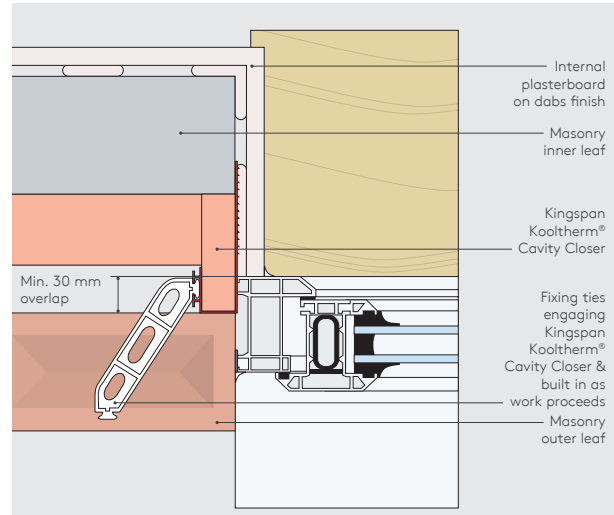


Figure 7: Jamb Detail Incorporating Kingspan Kooltherm® Cavity Closer at a Normal Reveal

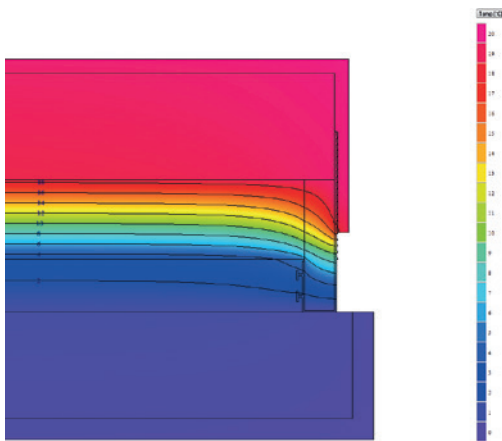


Figure 6: Temperatures & Heat Flows from Numerical Modelling of Jamb Detail shown in Figure 6

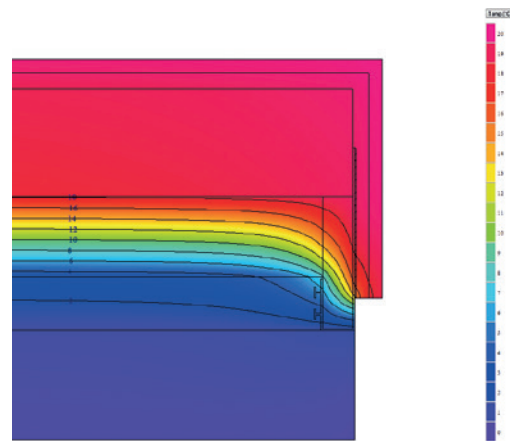


Figure 8: Temperatures & Heat Flows from Numerical Modelling of Jamb Detail shown in Figure 8

Design Considerations

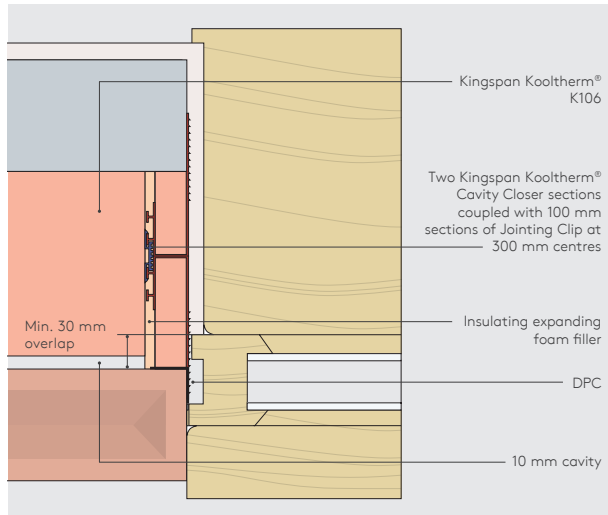


Figure 9: Jamb Detail Incorporating Two Kingspan Kooltherm® Cavity Closer Sections Coupled 'Back-to-Back' with a Jointing Clip

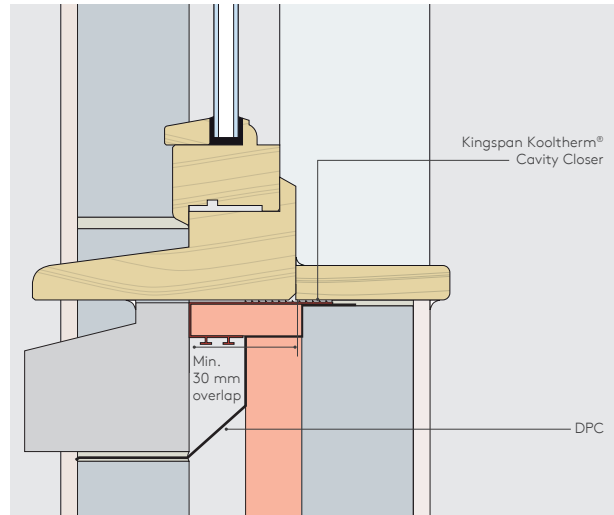


Figure 11: Sill Detail Incorporating Kingspan Kooltherm® Cavity Closer

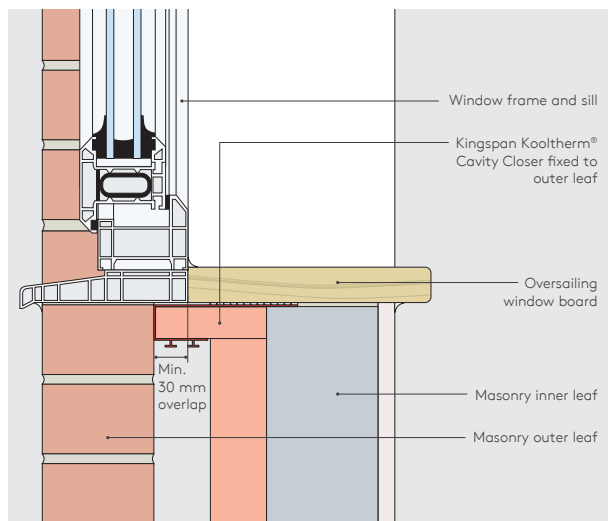


Figure 10: Sill Detail Incorporating Kingspan Kooltherm® Cavity Closer at a Normal Reveal

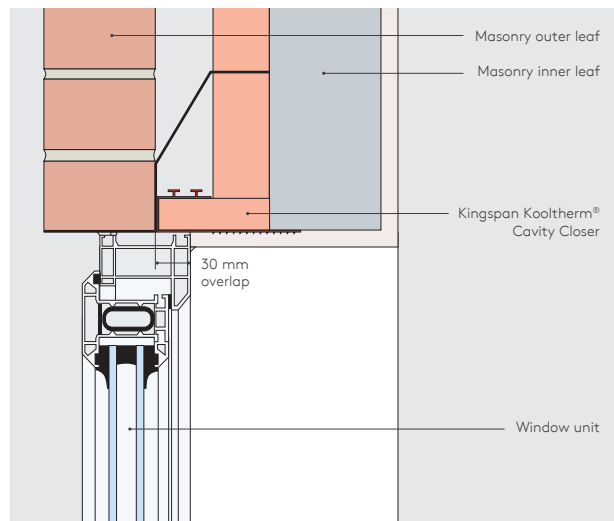


Figure 12: Head Detail Incorporating Kingspan Kooltherm® Cavity Closer

Sitework

Selecting a Section

- The width of cavity to be closed will decide the size of section, or combination of sections to be used.
- Kingspan Kooltherm® Cavity Closer should be fixed with their flange against the inner leaf as shown.

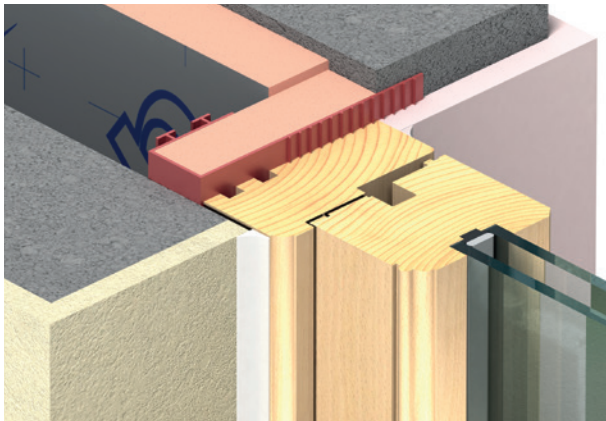


Figure 13: Kingspan Kooltherm® Cavity Closer at a Check Reveal

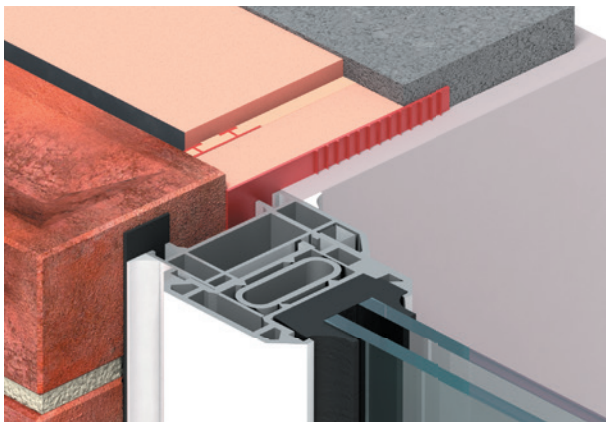


Figure 14: Kingspan Kooltherm® Cavity Closer at a Normal Reveal

Basic Installation Principles for New Walls

- Kingspan Kooltherm® Cavity Closer can be built-in as work proceeds.

- Kingspan Kooltherm® Cavity Closer fixing ties slot into the cavity side of the profile and key into the mortar bed of the outer masonry skin.

NB Fixing ties can not be used when two sections are joined back to back.

- The fixing flange should always overlap the masonry by 15 mm (min.), be tight to the masonry and securely fixed with a suitable masonry fixing to the masonry through the holes provided in the fixing flange.
- Kingspan Kooltherm® Cavity Closer should fit tightly into the cavity opening and no gaps should be left between the closer and either wall leaf.

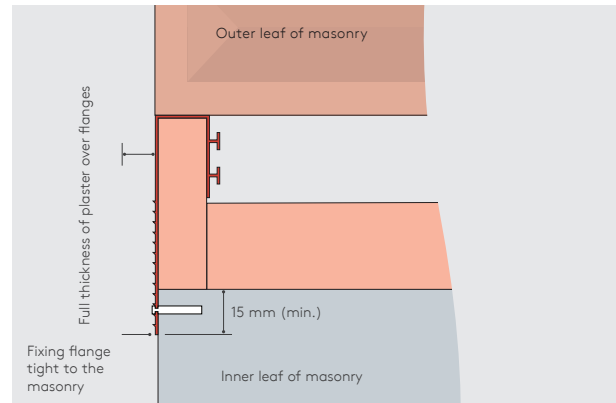


Figure 15: Basic Installation Principles

- An appropriate lintel and damp proof course is incorporated at the head.
- Where an insulated lintel is used a head closer section will not be required and the jamb sections of closer will butt up against the lintel. If required, a Kingspan Kooltherm® Cavity Closer section can be used at the head where a separate lintel is used for each leaf.

Sitework

Installation as Individual Sections

- For the sill, cut Kingspan Kooltherm® Cavity Closer precisely to the frame width.
- For the jambs, the sections should overhang the bottom of the sill Kingspan Kooltherm® Cavity Closer by 50 mm.
- Cut off the fixing flange as necessary to allow fitting of Kingspan Kooltherm® Cavity Closer into the cavity below the frame. If used at the head of the frame, cut Kingspan Kooltherm® Cavity Closer to extend 50 mm beyond each vertical jamb section.
- The Kingspan Kooltherm® Cavity Closer sections are built in as the wall is constructed.

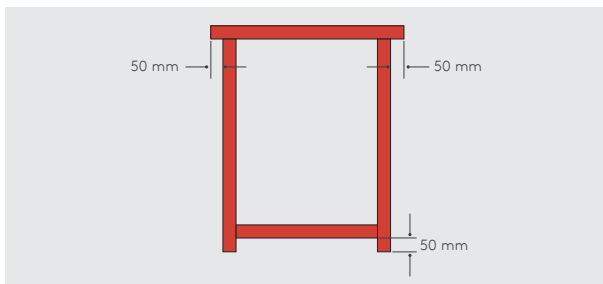


Figure 16: Kingspan Kooltherm® Cavity Closer Sill, Jamb & Head Sections

Window Frame Fixing

- When fixing the window follow the frame fixing procedure:
 - 1 offer up frame;
 - 2 wedge frame in position;
 - 3 secure frame in position to masonry; and
 - 4 seal frame internally and externally, using compressible sealing tape where necessary.

Use in Window / Door Replacement and Refurbishment Procedure

- Cut out and clear away any masonry that closes the cavity.
- Kingspan Kooltherm® Cavity Closer must be secured in position with wedges and fixings through the fixing flange to ensure no movement.
- Offer up the window / door frame, secure to the masonry and use standard flange clips to fix the frame to the Kingspan Kooltherm® Cavity Closer section.

Use of Butt Joints

- Kingspan Kooltherm® Cavity Closer sections can be butt jointed but should be limited to not more than one joint per frame side.
- To facilitate alignment, machine-cut ends should be butted in a preference to those cut on site.
- A joint strip will enable abutting sections to be connected and aligned when Kingspan Kooltherm® Cavity Closer is built in on its own.
- The use of adhesive aluminium foil around a joint will prevent water tracking.

Sitework

General

Cutting

- Cutting should be carried out using a fine toothed saw in such a manner that cross-sectional cuts are square.

Finishing

- Plaster or floor screed is applied directly to Kingspan Kooltherm® Cavity Closer as the section provides an effective key.
- Where it is used in conjunction with a floor screed at a door threshold, the screed should be of sufficient thickness (65 mm minimum) or reinforced to prevent cracking.

Plastering

- Note that the first coat of plaster should be pricked up into the keys on the Kingspan Kooltherm® Cavity Closer and then scored as a key for the next coat of plaster.

Dry-lining

- The dabs for dry lining readily key into the Kingspan Kooltherm® Cavity Closer.

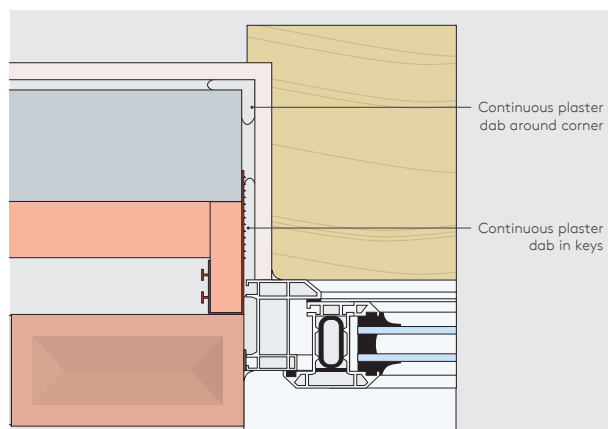


Figure 17: Kingspan Kooltherm® Cavity Closer with Continuous Plaster Dab in Fins

Fixing Oversailing Window Boards

- Window boards should be fixed in the conventional manner.
- Direct fixing to Kingspan Kooltherm® Cavity Closer is insufficient. Where an embedded tiled inner sill or threshold is required, the Kingspan Kooltherm® Cavity Closer profile provides a key for cement bedding.

Completion

- On completion, the frame is sealed to the surrounding masonry and internal plaster in accordance with normal practice.

Limitations of Use

- Kingspan Kooltherm® Cavity Closer is non-loadbearing and should not be used to support window or door frames, nor used in place of normal cavity wall ties.

Availability

- Kingspan Kooltherm® Cavity Closer is available through specialist insulation distributors and selected builders' merchants throughout the UK.

Packaging

- According to quantity, Kingspan Kooltherm® Cavity Closer sections are supplied in polythene packs, which are recyclable.

Storage

- Care must be taken when storing to prevent distortion of the sections.
- Kingspan Kooltherm® Cavity Closer should not be exposed to excessive heat.
- The packaging of Kingspan Kooltherm® Cavity Closer should not be considered adequate for outdoor protection.
- Ideally, sections should be stored inside a building. If, however, outdoor storage cannot be avoided, then the sections should be stacked clear of the ground and covered with a polythene sheet or weatherproof tarpaulin. Sections where the insulation core has been allowed to get wet should not be used.

Health and Safety

- Kingspan Insulation products are chemically inert and safe to use.
- A Safety Information Data Sheet for this product is available from the Kingspan Insulation website www.kingspaninsulation.co.uk/safety.

Product Details

Product Description

Kingspan Kooltherm® Cavity Closer is a cavity closer J-section comprising a uPVC extrusion with a premium performance fibre-free rigid thermoset phenolic insulation core manufactured with a blowing agent that has zero Ozone Depletion Potential (ODP) and low Global Warming Potential (GWP).



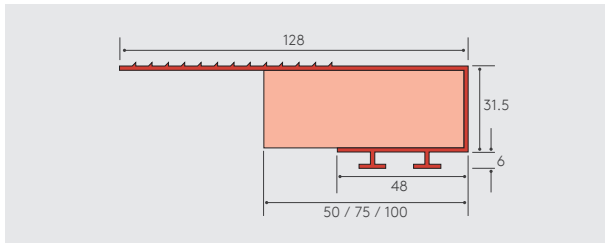
Sections are manufactured in thirteen profile widths ranging from 50-150 mm and are available as standard in 2.4 m lengths. Jointing Clips extend the range further by enabling sections to be coupled back-to-back, in order to suit cavity widths of up to 300 mm.

The casing incorporates tee projections along one plane length for the prevention of water tracking within the cavity, and fins along the widest plane length, which form an effective key for the direct application of plaster or screed.

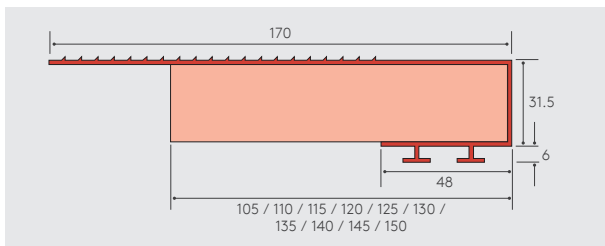
Kingspan Kooltherm® Cavity Closer is available from specialist insulation distributors and selected builders merchants.

Standard Dimensions

Kingspan Kooltherm® Cavity Closer 50, 75 & 100.



Kingspan Kooltherm® Cavity Closer 105, 110, 115, 120, 125, 130, 135, 140, 145 & 150.



Standards & Approvals

Kingspan Kooltherm® Cavity Closer is manufactured to the highest standards under a management system certified to ISO 9001: 2015 (Quality management systems. Requirements), ISO 14001: 2015 (Environmental Management Systems. Requirements), ISO 45001: 2018 (Health and Safety Management Systems. Requirements with guidance for use) and ISO 50001: 2018 (Energy Management Systems. Requirements with guidance for use).

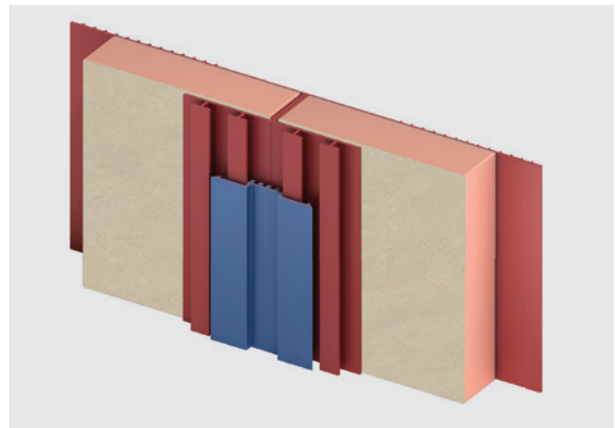
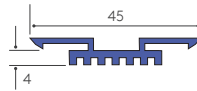
Accessories

Kingspan Kooltherm® Cavity Closer is complemented by a full range of accessories to maximise the efficiency and scope for variable design options. Clip sections are supplied in 1 metre lengths and are colour coded.

Jointing Clip

This connects two Kingspan Kooltherm® Cavity Closer sections for use in cavities greater than 150 mm wide. The clip should be installed in 100 mm lengths at 300 mm centres.

Colour: blue

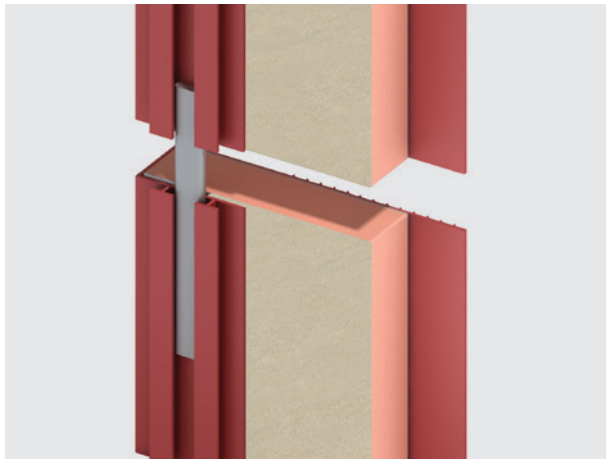
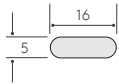


Product Details

Joining Strip

This connects two Kingspan Kooltherm® Cavity Closer sections, aligning them in a butt joint. The strip allows for opening sizes in excess of 2.4 m, and for the reduction of wastage through the use of off-cuts. Limited to one butt joint per side of the opening.

Colour: grey



Optional Fixing Tie

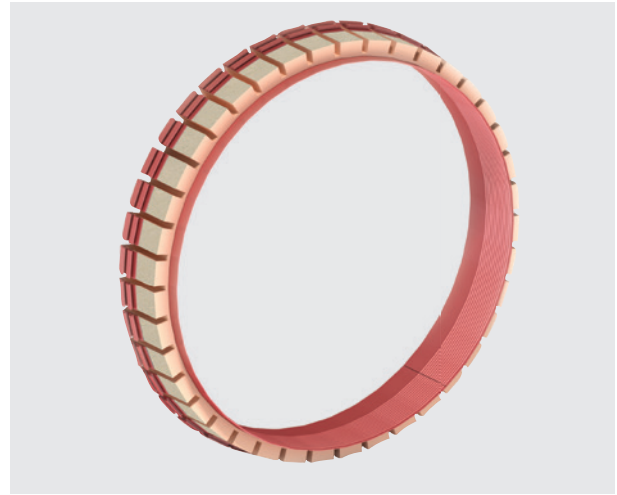
The tie is an optional / additional fixing and is particularly useful when using Kingspan Kooltherm® Cavity Closer to form openings. They can not be used when two sections are joined back to back. The tie is designed with different angled ends which slot securely between the tee flanges at the “back” of the Kingspan Kooltherm® Cavity Closer section and keys fully into the mortar bed joint of the outer masonry skin. They are moulded PVC-U supplied in packs of 150.

Colour: white



Curved Sections

Kingspan Kooltherm® Cavity Closer can be factory formed to any specified radius for bullseye windows, curved heads, etc.



Responsible Sourcing

Kingspan Kooltherm® Cavity Closer produced at Kingspan Insulation's Selby, North Yorkshire manufacturing facility is certified to BES 6001 (Framework Standard for the Responsible Sourcing of Construction Products) 'Excellent'.



NB The above information is correct at the time of writing. Please confirm at the point of need by visiting the Kingspan Insulation website (see rear cover), from which a copy of Kingspan Insulation's BES 6001 certificate can be obtained.

Sustainability & Responsibility

Kingspan Insulation has a long-term commitment to sustainability and responsibility: as a manufacturer and supplier of insulation products; as an employer; as a substantial landholder; and as a key member of its neighbouring communities.

A report covering the sustainability and responsibility of Kingspan Insulation Ltd's operations at its Pembridge, Herefordshire and Selby, North Yorkshire manufacturing facilities is available at www.kingspaninsulation.co.uk/sustainabilityandresponsibility

Product Details

Thermal Properties

Thermal Conductivity

The thermal conductivity (λ -value) of the fibre-free rigid thermoset insulation core of Kingspan Kooltherm® Cavity Closer is 0.022 W/mK.

Durability

If correctly applied, Kingspan Kooltherm® Cavity Closer has an indefinite life. Its durability depends on the supporting structure and the conditions of its use.

Resistance to Solvents, Fungi & Rodents

Kingspan Kooltherm® Cavity Closer is resistant to short-term contact with petrol and with most dilute acids, alkalis and mineral oils. However, it is recommended that any spills be cleaned off fully before the products are installed. Ensure that safe methods of cleaning are used, as recommended by suppliers of the spilt liquid.

Kingspan Kooltherm® Cavity Closer is not resistant to some solvent-based adhesive systems, particularly those containing methyl ethyl ketone, esters and aromatic hydrocarbons (e.g. toluene, xylene, benzene). Adhesives containing such solvents should not be used in association with these products.

Damaged product or product that has been in contact with harsh solvents or acids should not be used.

The insulation core and u-PVC J-section extrusion used in the manufacture of Kingspan Kooltherm® Cavity Closer resist attack by mould and microbial growth and do not provide any food value to vermin.

Fire Performance

There are potential restrictions placed upon this product which vary dependant on building type, height, construction and location. For guidance regarding the routes to compliance for meeting the fire safety requirements of the Building Regulations / Standards, refer to the relevant links to Government websites at www.kingspaninsulation.co.uk/fireregulations.

Further details on the fire performance of Kingspan Insulation products may be obtained from the Kingspan Insulation Technical Service Department (see rear cover).

About Kingspan Insulation

Company Details

Kingspan Insulation Ltd is part of the Kingspan Group plc., one of Europe's leading construction product manufacturers. The Kingspan Group was formed in the late 1960s and is a publicly quoted group of companies headquartered in Kingscourt, County Cavan, Ireland.

Kingspan Insulation Ltd is a market leading manufacturer of premium and high performance rigid insulation products and insulated systems for building fabric and building services applications.

Products & Solutions

Optimum, premium and high performance rigid insulation products for building fabric applications, including roofs, walls and floors.

- Kingspan OPTIM-R® - optimum performance vacuum insulation panel (VIP) systems.
- Kingspan Kooltherm® - premium performance phenolic insulation.
- Kingspan Therma™ - high performance PIR insulation.
- K-Roc® - rock mineral fibre insulation.
- Kingspan GreenGuard® - extruded polystyrene insulation (XPS).
- Kingspan TEK® - structural insulated panels (SIPs).
- Cavity closers - PVC-U extrusions with an insulation core.
- Membranes - for pitched roofs and walls.

Services

We are proud to offer one of the most advanced support services in the construction industry, designed to give fast and accurate advice not matter what your role is. Visit our website to access the following services.

- U-value calculations - free, quick and easy U-value calculations with our U-value Calculator.
- Help and advice on your projects, including stockists, how to guides, regulatory guidance and e-learning.
- Building Information Modelling (BIM) - download BIM objects for our products.
- Tapered roofing service - Kingspan Insulation's tapered roofing systems come with a supporting design service to ensure the most cost-effective solution for a roof is identified.
- CPDs - Kingspan Insulation offer a number of free CPD seminars for architects and specifiers covering a wide range of industry topics. CPDs can be booked or a range of online learning courses can be found online.

Planet Passionate

Planet Passionate is our new 10-year group wide global sustainability strategy aims to impact on three big global issues: climate change, circularity and protection of our natural world.

The Planet Passionate strategy is made up of 12 ambitious targets, addressing the impact of Kingspan's business operations and manufacturing on the four key areas of energy, carbon, circularity and water, with commitments by 2030 to include:

- energy: powering 60% of all Kingspan operations directly from renewable energy with a minimum of 20% of this energy generated on manufacturing sites;
- carbon: achieving net zero carbon manufacturing and a 50% reduction in product CO₂ intensity from primary supply partners;
- circularity: upcycling of 1 billion PET bottles per annum into insulation products plus zero company waste to landfill across all sites; and
- water: harvesting 100 million litres of Kingspan's water usage from rainwater.

Contact Details

Kingspan Insulation Ltd

Pembridge | Leominster
Herefordshire | HR6 9LA

T: +44 (0) 1544 388 601

E: info@kingspaninsulation.co.uk

www.kingspaninsulation.co.uk

For individual department contact details please visit

www.kingspaninsulation.co.uk/contact

The information contained in this brochure is believed to be correct at the date of publication. Kingspan Insulation Limited ("Kingspan Insulation") reserves the right to alter or amend the product specifications without notice due to continuous improvement commitments. There may also be relevant changes between publications with regard to legislation, or other developments affecting the accuracy of the information contained in this brochure. Product thicknesses shown in this document should not be taken as being available ex-stock and reference should be made to the current Kingspan Insulation price-list or advice sought from Kingspan Insulation's Customer Service Department. The information, technical details and fixing instructions etc. included in this literature are given in good faith and apply to uses described. Kingspan Insulation does not accept responsibility for issues arising from using products in applications different from those described within this brochure or failure to correctly follow the information or instructions as described within this brochure. Recommendations for use should be verified with a suitable expert or professional for suitability and compliance with actual requirements, specifications and any applicable laws and regulations. For other applications or conditions of use, Kingspan Insulation offers a technical advisory service (see above for contact details), the advice of which should be sought for uses of Kingspan Insulation products that are not specifically described herein. Please check that your copy of this literature is current by contacting the Kingspan Insulation Marketing Department.

© Kingspan, Kingspan GreenGuard, KoolDuct, Kooltherm, nilvent, OPTIM-R, TEK and the Lion Device are Registered Trademarks of the Kingspan Group plc in the UK, Ireland and other countries. All rights reserved.

TM Therma is a Trademark of the Kingspan Group plc.

Kingspan Insulation Ltd is not associated with, and its products have not necessarily been tested by, the GREENGUARD Environmental Institute.

Registered in England & Wales, No. 01882722. Registered Office: Pembridge, Leominster, Herefordshire HR6 9LA UK. VAT GB428602456.

