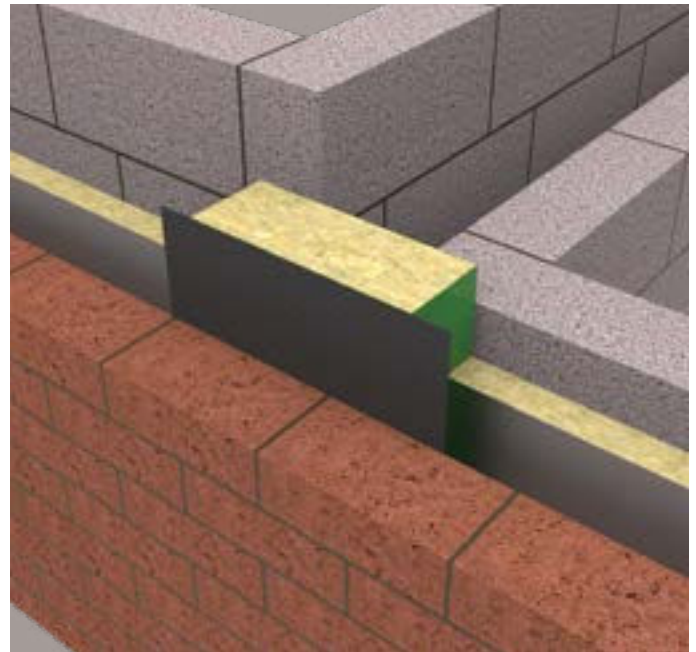




# PARTY WALL DPC

Cavity fire barrier for masonry wall junctions

- » Up to 4 hours fire integrity
- » Vertical, horizontal and staggered options
- » Integral DPC
- » Specified in terraced, semi-detached, apartments and major projects
- » Meets requirements of Robust Detail Part E and Approved Document B
- » Maximum cavity width available: 300mm
- » Easily installed with a friction fit
- » Third-party certificated by IFC



# PARTY WALL DPC



## Application

ARC Party Wall DPC enables the closing of an external cavity at either party wall or party floor junctions where building regulations require the use of a mineral wool closer for acoustic insulation purposes.

Manufactured from non-combustible rockfibre mineral wool insulation and sleeved in colour coded polythene for on-site identification and protection. The ARC Party Wall DPC includes an integral DPC, satisfying any requirement for a DPC to be installed between the barrier and external brickwork.

## Installation

ARC Party Wall DPC is designed to be installed as the brick and block work progresses, requiring only a friction fit within the cavity. No mechanical fixing is necessary.

This product does not require a compression fit. Accuracy of brick work is essential to ensure no gaps exist around the barrier.

### Vertical Installations:

The internal block work should be completed first. The ARC Party Wall DPC is then installed against this, with the brickwork being laid tight against the DPC, ensuring the barrier is tightly fitted with no gaps. The barrier should be oriented so that the 100mm lap of DPC is at the bottom of each length, this lap should run in front of the length below.

### Horizontal Installations:

As the brick and block work progresses, set the large flange of DPC in to the mortar between two courses of block (as shown overleaf). The height for this should be chosen so that the barrier sits against the edge of the floor, and the DPC is tight with no sags.

### Tips for successful installation:

Ensure that the built cavity width is appropriate for the size of barrier being installed. If necessary bring together the internal and external leaf, as gaps cannot be present around the cavity fire barrier.

Where it is necessary to join lengths together, these should be tightly butted ensuring there are no gaps in the insulation. The coloured polythene encapsulation does not need to be removed at joints, but care should be taken to ensure that excessive polythene does not cause any gaps in the insulation itself.

If a shorter length is required, for example at the top or end of a wall, it is recommended to use a knife to cut through the DPC in the required position, and then to cut through the polythene and insulation using a small hand saw.

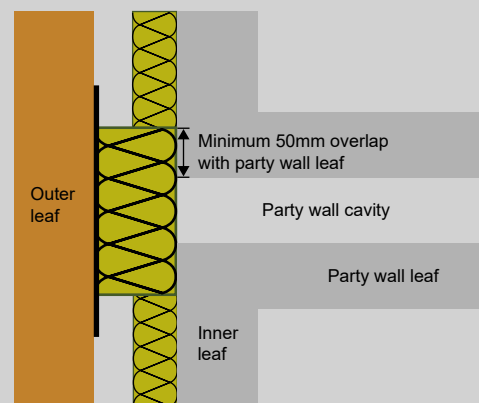
The coloured polythene encapsulation does not need to be removed, and offers product identification once installed.

## Key Stats

Length supplied	1.2m
Third-party certification	IFC certificate number: IFCC 1728
Insulation	Non-combustible rockfibre mineral wool
Thermal conductivity	0.037W/mK
Fire rating	Up to 4 hrs
Insulation performance	Up to 2 hrs
Test standard	EN1366-4
Construction type	Masonry
Orientation	Vertical or horizontal
Integral DPC	Yes

## Party Wall Junction

ARC's Party Wall DPC is designed for use at the party wall junction, and should be fitted with a minimum 50mm overlap with the party wall leaf either side of the party wall cavity. At 250mm wide, Party Wall DPC will suit up to a 150mm party wall cavity.



# PARTY WALL DPC

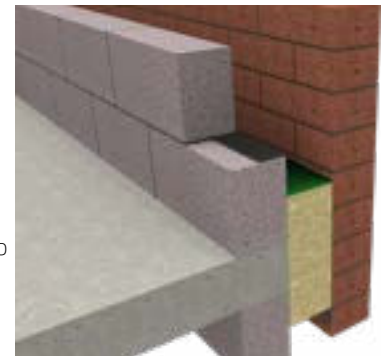


## Product & Packaging Specification: Standard Vertical Application

Product Code	Maximum Cavity Width	Sleeve Colour	Masonry Fire Performance		Compression Fit Required	Dimensions	Lengths per pack	Packs per pallet
			Integrity	Insulation				
PW50	Up to 50mm	Green	4 hrs	2 hrs	0mm (Friction fit)	55 x 250 (340 DPC) x 1200mm	12	14
PW75	Up to 75mm	Green	4 hrs	2 hrs	0mm (Friction fit)	80 x 250 (340 DPC) x 1200mm	8	14
PW85	Up to 85mm	Green	4 hrs	2 hrs	0mm (Friction fit)	90 x 250 (340 DPC) x 1200mm	6	14
PW90	Up to 90mm	Green	4 hrs	2 hrs	0mm (Friction fit)	95 x 250 (340 DPC) x 1200mm	6	14
PW100	Up to 100mm	Green	4 hrs	2 hrs	0mm (Friction fit)	105 x 250 (340 DPC) x 1200mm	6	14
PW115	Up to 115mm	Green	4 hrs	2 hrs	0mm (Friction fit)	120 x 250 (340 DPC) x 1200mm	4	14
PW125	Up to 125mm	Green	4 hrs	2 hrs	0mm (Friction fit)	130 x 250 (340 DPC) x 1200mm	4	14
PW140	Up to 140mm	Green	4 hrs	2 hrs	0mm (Friction fit)	145 x 250 (340 DPC) x 1200mm	4	14
PW150	Up to 150mm	Green	4 hrs	2 hrs	0mm (Friction fit)	155 x 250 (340 DPC) x 1200mm	4	14
PW175	Up to 175mm	Green	4 hrs	2 hrs	0mm (Friction fit)	180 x 250 (340 DPC) x 1200mm	4	14
PW200	Up to 200mm	Green	4 hrs	2 hrs	0mm (Friction fit)	205 x 250 (340 DPC) x 1200mm	4	14
PW250	Up to 250mm	Green	4 hrs	2 hrs	0mm (Friction fit)	255 x 250 (340 DPC) x 1200mm	2	16
PW300	Up to 300mm	Green	4 hrs	2 hrs	0mm (Friction fit)	305 x 250 (340 DPC) x 1200mm	2	14

## Product & Packaging Specification: Horizontal Application

ARC Party Wall DPC Horizontal is suitable for installation horizontally within the external cavity at the edge of a separating floor. The integral DPC can be lapped back to the internal leaf, ensuring moisture is deflected back to the external face of the building, and negating the need to install a separate cavity tray.



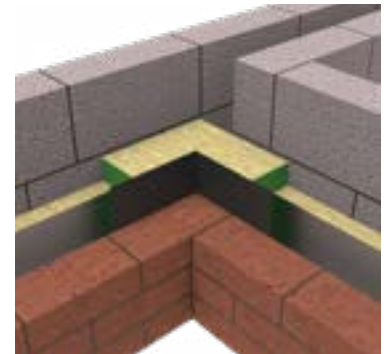
Product Code	Maximum Cavity Width	Sleeve Colour	Masonry Fire Performance		Compression Fit Required	Dimensions	Lengths per pack	Packs per pallet
			Integrity	Insulation				
PW50H	Up to 50mm	Green	4 hrs	2 hrs	0mm (Friction fit)	55 x 250 (650 DPC) x 1200mm	12	14
PW75H	Up to 75mm	Green	4 hrs	2 hrs	0mm (Friction fit)	80 x 250 (650 DPC) x 1200mm	8	14
PW100H	Up to 100mm	Green	4 hrs	2 hrs	0mm (Friction fit)	105 x 250 (650 DPC) x 1200mm	6	14
PW125H	Up to 125mm	Green	4 hrs	2 hrs	0mm (Friction fit)	130 x 250 (700 DPC) x 1200mm	4	14
PW150H	Up to 150mm	Green	4 hrs	2 hrs	0mm (Friction fit)	155 x 250 (700 DPC) x 1200mm	4	14
PW175H	Up to 175mm	Green	4 hrs	2 hrs	0mm (Friction fit)	180 x 250 (700 DPC) x 1200mm	4	14
PW200H	Up to 200mm	Green	4 hrs	2 hrs	0mm (Friction fit)	205 x 250 (700 DPC) x 1200mm	4	14
PW225H	Up to 225mm	Green	4 hrs	2 hrs	0mm (Friction fit)	230 x 250 (750 DPC) x 1200mm	2	16
PW250H	Up to 250mm	Green	4 hrs	2 hrs	0mm (Friction fit)	255 x 250 (750 DPC) x 1200mm	2	16
PW275H	Up to 275mm	Green	4 hrs	2 hrs	0mm (Friction fit)	280 x 250 (750 DPC) x 1200mm	2	14
PW300H	Up to 300mm	Green	4 hrs	2 hrs	0mm (Friction fit)	305 x 250 (750 DPC) x 1200mm	2	14

# PARTY WALL DPC



## Product & Packaging Specification: Staggered Application

ARC Party Wall DPC L-shape is suitable for installation vertically at the party wall junction, where one dwelling is set back from the adjoining dwelling. The L-shape follows the external cavity. An integral DPC is included on the internal corner which sits against the external brickwork.



Product Code	Maximum Cavity Width	Sleeve Colour	Masonry Fire Performance		Compression Fit Required	Dimensions	Lengths per pack	Packs per pallet
			Integrity	Insulation				
PW50L	Up to 50mm	Green	4 hrs	2 hrs	0mm (Friction fit)	55 x 250 x 250 (500 DPC) x 1200mm	8	10
PW75L	Up to 75mm	Green	4 hrs	2 hrs	0mm (Friction fit)	80 x 250 x 250 (450 DPC) x 1200mm	8	10
PW85L	Up to 85mm	Green	4 hrs	2 hrs	0mm (Friction fit)	90 x 250 x 250 (430 DPC) x 1200mm	6	10
PW90L	Up to 90mm	Green	4 hrs	2 hrs	0mm (Friction fit)	95 x 250 x 250 (420 DPC) x 1200mm	6	10
PW100L	Up to 100mm	Green	4 hrs	2 hrs	0mm (Friction fit)	105 x 250 x 250 (400 DPC) x 1200mm	4	10
PW115L	Up to 115mm	Green	4 hrs	2 hrs	0mm (Friction fit)	120 x 250 x 250 (370 DPC) x 1200mm	4	10
PW125L	Up to 125mm	Green	4 hrs	2 hrs	0mm (Friction fit)	130 x 250 x 250 (350 DPC) x 1200mm	4	10
PW140L	Up to 140mm	Green	4 hrs	2 hrs	0mm (Friction fit)	145 x 250 x 250 (320 DPC) x 1200mm	4	10
PW150L	Up to 150mm	Green	4 hrs	2 hrs	0mm (Friction fit)	155 x 250 x 250 (300 DPC) x 1200mm	4	10
PW175L	Up to 175mm	Green	4 hrs	2 hrs	0mm (Friction fit)	180 x 250 x 250 (250 DPC) x 1200mm	4	10
PW200L	Up to 200mm	Green	4 hrs	2 hrs	0mm (Friction fit)	205 x 250 x 250 (200 DPC) x 1200mm	2	10
PW250L	Up to 250mm	Green	4 hrs	2 hrs	0mm (Friction fit)	255 x 300 x 300 (200 DPC) x 1200mm	2	10
PW300L	Up to 300mm	Green	4 hrs	2 hrs	0mm (Friction fit)	305 x 350 x 350 (200 DPC) x 1200mm	2	10

## Fire Properties

ARC Party Wall DPC has been fire tested in accordance with the principles given in EN1366-4, achieving up to 240 minutes fire integrity within a masonry construction.

ARC Party Wall DPC is certificated by IFC Certification, a third-party accreditation scheme. IFC's product certifications are designed to give confidence to architects, specifiers, contractors, users, occupiers and owners that products have been thoroughly and independently evaluated and will continue to be manufactured to the same specification as originally tested.

IFC certificate number: IFCC 1728

ARC Party Wall DPC is manufactured using rockfibre mineral wool which achieves a fire classification of Euroclass A1 as defined in BS EN 13501-1.

## Acoustic Properties

The rockfibre mineral wool insulation used in the manufacture of ARC Party Wall DPC has the following acoustic absorption properties. Figures quoted were achieved with a solid backing.

Thickness	125Hz	250Hz	500Hz	1000Hz	2000Hz	4000Hz
40mm	0.19	0.46	0.79	0.92	1.00	1.00
100mm	0.57	1.00	1.00	1.00	1.00	1.00

Part E Robust Details compliance:

	Separating Wall/Party Wall	Separating Floor
Masonry	E-WM 1-21	N/A
Concrete	N/A	E-FC 1-14

# PARTY WALL DPC



## Standards

ARC Party Wall DPC is manufactured using rockfibre mineral wool which achieves a fire classification of Euroclass A1 as defined in BS EN 13501-1, and conforms to BS EN 13162 and EN16001 Energy Management Systems.

ARC's rockfibre mineral wool insulation has a thermal conductivity of 0.037W/mK.

## Non-Standard Applications

Where usage falls outside of the certificated scope, for example when used with external cladding, or with an internal metal frame system, performance of the fire barrier will depend heavily upon the structural integrity and fire performance of the surrounding construction.

Specifiers must ensure all construction elements that make up part of the internal or external leaf of the wall, including support systems, are suitable for use with a cavity fire barrier for the length of fire integrity and insulation required. Particular attention must be paid to any possible deflection or distortion which could cause gaps to form between the construction and any fire barrier installed.

In the event of a fire, ARC Building Solutions Ltd cannot accept liability for failure where usage is outside of the standard application, including but not limited to, where deflection or distortion has allowed gaps to form around the barrier, or where the barrier is not fitted in accordance with the manufacturer's guidelines.

## Storage and Packaging

ARC Party Wall DPC is supplied in polythene packs which are designed for transporting and protecting the products. It is not recommended that the packs are stored in direct sunlight. When storing the barriers for longer periods of time it is recommended that the product should be stored indoors, or under cover.

## Environment

No CFCs or HCFCs are involved in the manufacturing process of ARC's rockfibre mineral wool insulation. The material presents no known threat to the environment and is classed as ODP and GWP zero.

ARC Party Wall DPC has a Green Guide rating of A+.

## Health and Safety

ARC Building Solutions has an approved Health and Safety Policy and is committed to working and supplying products safely. ARC's rockfibre mineral wool is not classed as a possible human carcinogen. We have assessed products as required by Substances Hazardous to Health Regulations (COSHH). An ARC COSHH data sheet is available and can be downloaded from ARC's website.

Any information provided within this document is intended for guidance only. Expert technical advice should be sought before specification or installation of any product. It is of particular importance to ensure that any fire barrier or fire stopping product is tested for use with the exact application intended. ARC Building Solutions Ltd cannot accept liability for failure where usage is outside of the standard application, including but not limited to, where deflection or distortion has allowed gaps to form around the barrier, or where the barrier is not fitted in accordance with the manufacturer's guidelines.

© 2023 ARC Building Solutions Ltd. ARC and T-Barrier are registered trademarks of ARC Building Solutions Ltd.



Certificate Number 19310  
ISO 9001, ISO 14001  
ISO 45001