

Twin Scrim Lamella Pads

Lamella slabs which provide a strong, non-combustible core for a variety of sandwich panel type products.

Technical Guide

PRODUCT

Lamella slabs are generally used to form the core of structural or composite panels.

Standard rock mineral fibre in its originally produced form has excellent fire, thermal and acoustic insulation properties. For improved structural performance the rock mineral fibre is cut and reformed into 'lamellas' where the fibres run perpendicular to the face of the panel, giving a product with far greater compressive strength and resistance to shear.

An open weave glass fibre reinforcement mesh is applied to both faces in order to provide structure to the pad whilst allowing the adhesive to form a bond between the fibres of the core and the facing used in the construction of the composite panel.

Specifically designed so that the rock fibres interface with the skins of the bonded panel enabling a good adhesive take up into the structure of the rock mineral fibre and results in a high shear strength. A high-quality durable adhesive specifically designed for this purpose is essential to ensure satisfactory overall performance.

The slab may be supplied flat or with profiled faces on one or both sides.

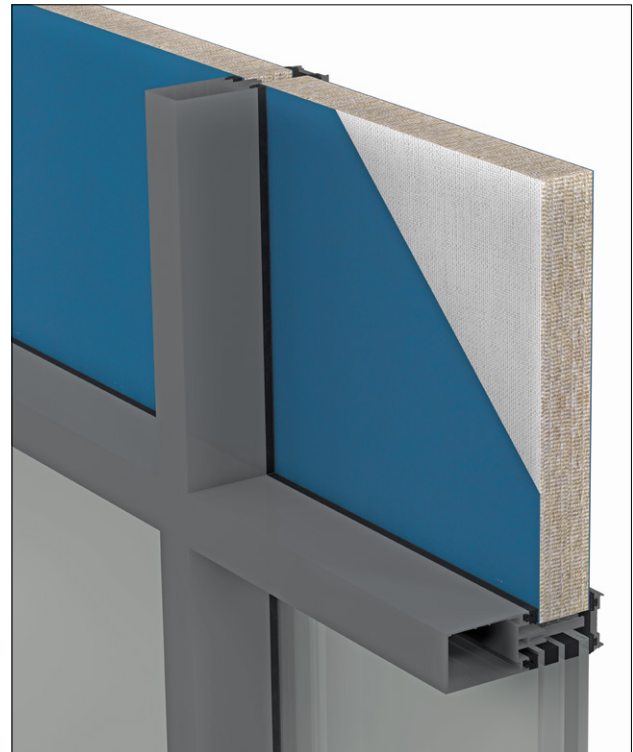
Edge rebate details can be machined to bespoke requirements.

FEATURES

- High density stone wool lamella core.
- A range of densities available.
- Close tolerance dimensions available if required.

BENEFITS

- Provides high rigidity for composite or sandwich panels.
- Can assist in the achievement of non combustibility in the overall composite panel.
- Can enhance the acoustic performance of the overall composite panel.



Example product installation schematic using materials by others

APPLICATIONS

Lamella slabs are used as the core in the manufacture of sandwich panels.

Sandwich panels with a rock mineral fibre core have a wide range of applications particularly where acoustic or fire performance is important e.g. partition systems, external cladding systems, cold store panels and curtain walling spandrel panels.

PHYSICAL INFORMATION

- Twin Scrim Lamella Pads can be supplied in various rock mineral fibre grades ranging from density 100Kg/m³ to 200Kg/m³. A wide range of other grades are available on request.
- Lamella 100
For use with profiled metal skins or flat metal steel thickness 1.0mm minimum or aluminium thickness 1.6mm minimum.
- Lamella 140
For use with flat metal skins of steel thickness 0.5mm minimum or aluminium thickness 0.9mm minimum.
- Dimensions
Supplied in dimensions to suit the customers bespoke requirements.

Can be manufactured to tolerances of:
+/- 0.5mm on the thickness
+/- 2.0mm in the length and width.
- Finishes
Usually supplied with glass fibre open weave carrier facings to both sides which ensure integrity of the slab prior to manufacture and permits full adhesive infusion between panel skin and rock fibre.

Other finishes such as aluminium foil or tissue faces are available on request.

PACKAGING

AIM Twin Scrim Lamella Pads are stretch wrapped onto wooden pallets with a showerproof polythene pallet cover and high quality edge protectors.

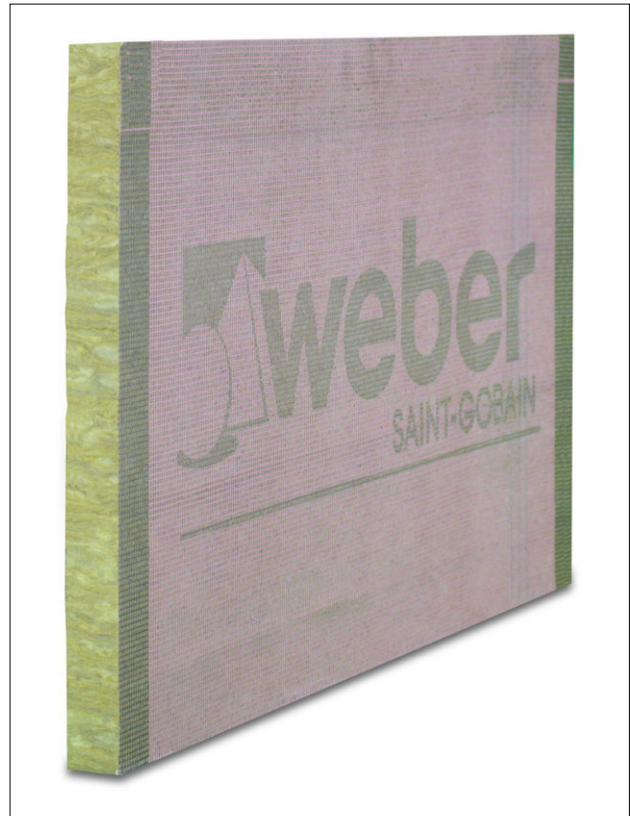
TECHNICAL INFORMATION

Fire Performance

Overall fire resistance is dependent on the type of facing used and the adhesive required to bond it to the lamella meaning any fire performance would need to be determined by testing.

Thermal Properties

Lamella slabs have excellent thermal performance.



Acoustic Properties

Bonded panels manufactured with lamella slabs offer high resistance to transmitted sound.

Where perforated metal is used as a face, the panel with also provide good acoustic absorption.

Dimensional

Dimensionally stable and may be used with different materials on each side without fear of delamination due to unequal expansion.



AIM are partners with NBS. Our products can be found on NBS Source and have been authored to NBS specification standards and have both CAWS and Uniclass 2015 classifications.

Items required for installation



PPE abrasion resistant gloves



PPE impact resistant goggles



RPE dust mask

HANDLING

Twin Scrim Lamella Pads are easy to handle but should be treated with relative care to ensure their integrity and shape is maintained.

STORAGE

Products are supplied on wooden pallets with edge protection and a shower proof hood. Products should be stored away from the elements until ready for installation.

Should indoor storage be impossible the product should be stacked clear of the ground and covered with a stout tarpaulin.

MAINTENANCE

This product does not contain moving parts and, if undisturbed in the cavity, requires no routine inspections or maintenance.

DURABILITY

AIM Twin Scrim Lamella Pads are chemically inert, completely vermin and rot proof and do not encourage the growth of fungi, mould or bacteria. Lamella slabs are not known to degrade under normal conditions found in buildings and will perform effectively for the life of the building.

HEALTH & SAFETY

Insulation products supplied by AIM are considered to be inert articles and as such are exempt from requirements to provide a Safety Data Sheet.

A Product Safety and Handling Information Sheet is available upon request.

ENVIRONMENT

Twin Scrim Lamella Pads have an ozone depletion potential of zero.

For product recycling please contact: Rockwool
T: 01656 868400 E: recycling@rockwool.co.uk

ORDERING

All Twin Scrim Lamella Pads are made to order. Products are typically supplied in seven to ten working days but lead times may vary depending on existing factory commitments.

There is no minimum order quantity or value although small orders may attract transport surcharges.

Please contact our experienced sales team on 01293 582 400 or sales@aimlimited.co.uk.

TECHNICAL SUPPORT

Technical Support is available from our experienced sales team on 01293 582 400 or sales@aimlimited.co.uk

ABOUT AIM

AIM are a quality insulation convertor with over 30 years experience in the design, testing & manufacturing of high quality fire barriers for customers worldwide.

AIM working in partnership with



T 01293 582400
E sales@aimlimited.co.uk
W www.aimlimited.co.uk